

FOLKLANDS



STOATS NEST ROAD, COULSDON

MONTHLY RENTAL OF £2,000

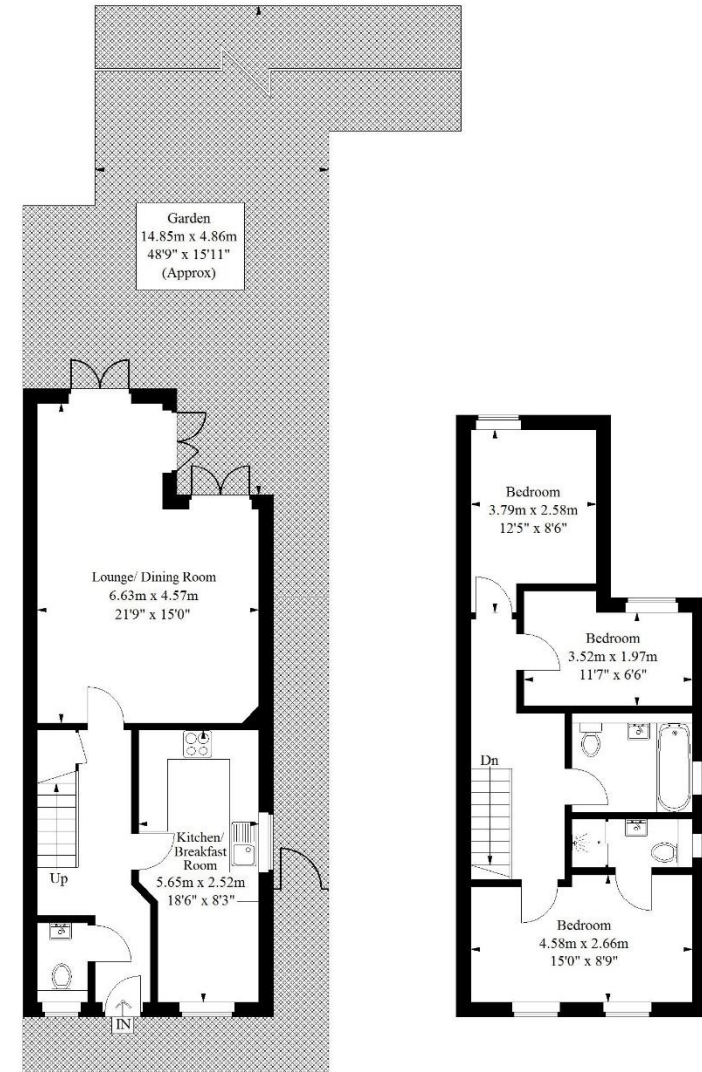






Stoats Nest Road, Coulsdon

Approximate Gross Internal Area
100.9 sq m / 1086 sq ft



Ground Floor = 53.8 sq m / 579 sq ft

First Floor = 47.1 sq m / 507 sq ft

Illustration for identification purposes only, measurements are approximate, not to scale.
FloorplansUsketch.com © 2019 (ID 568612)

INFO@FOLKLANDS.COM - 020 8686 0002

362 BRIGHTON ROAD - SOUTH CROYDON - CR2 6AL

- ❖ AVAILABLE FROM 23RD JANUARY 2024
- ❖ FULLY FURNISHED
- ❖ PRIVATE REAR GARDEN
- ❖ TWO BATHROOMS
- ❖ 0.4 MILES FROM COULSDON TOWN TRAIN STATION
- ❖ 0.5 MILES FROM REEDHAM TRAIN STATION
- ❖ NEWLY BUILT IN 2016
- ❖ LARGE LOUNGE/DINING ROOM
- ❖ SUPERBLY PRESENTED THROUGHOUT
- ❖ EPC EER B



**** Available from 23rd January 2024 ** Fully Furnished ****

A well-presented three-bedroom semi-detached house, conveniently located only 0.4 miles from Coulsdon town train station and 0.5 miles from Reedham train station, which both offer frequent services to London Bridge & London Victoria.

Offered to the market as fully furnished, this stylish home benefits from gated side access, it has a downstairs WC, and features an en-suite shower room to the master bedroom.

The accommodation comprises three bedrooms, a stylish family bathroom suite, an en-suite shower room, a downstairs WC, a contemporary fitted kitchen with space for a breakfast table, ample under-stairs storage and a large lounge/dining room with patio doors leading onto the lawned rear garden.

Furthermore, this property sits a short distance from the wide range of local amenities in Coulsdon town centre, it is within an easy reach of two well regarded golf clubs and is close-by to the open green expanse of Farthing Downs.

